



Enerdrive

DRIVING YOUR ENERGY NEEDS

eSYSTEM-D



WHAT'S INCLUDED?

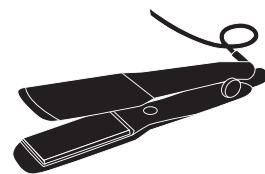
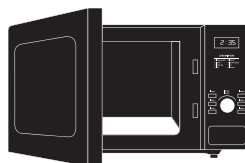
- ePOWER AC 40Amp 230v Charger
- ePOWER DC2DC 40+ Charger (Vehicle/Solar)
- Simarine Pico LCD WIFI Monitoring Screen
- Simarine 300A Main Battery Shunt
- Simarine SCQ25T Individual Load/Charge Module
- 3 Stud Main Negative Bus Bar
- 40A Low Battery Cutout
- Main System Circuit Breaker 120A
- Inverter Circuit Breaker 200A
- Solar Input Circuit Breaker 40A
- ePOWER DC2DC 60A Output Fuse Connection
- ePOWER AC Charger 50A Output Connection
- 24hr Critical Load 8 Circuit Fuse Block
- Main 12 Circuit "Wedge" Fuse Block with Negative Bus and Cover
- Battery Restart Switch for Lithium Batteries (12V Start Only)
- 12mm Black Plastic Mounting Board - Water & Rot Resistance

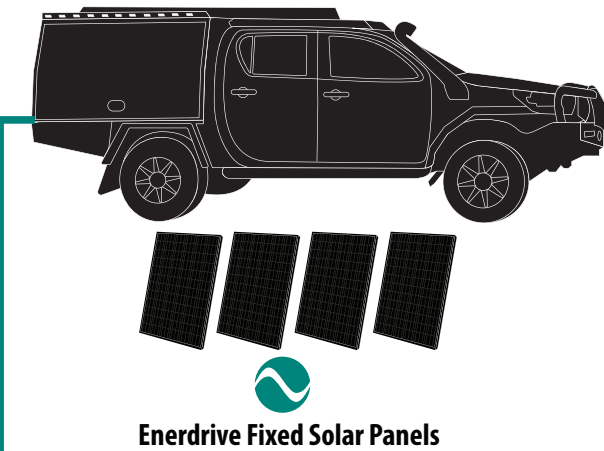


BENEFITS OF THIS SYSTEM

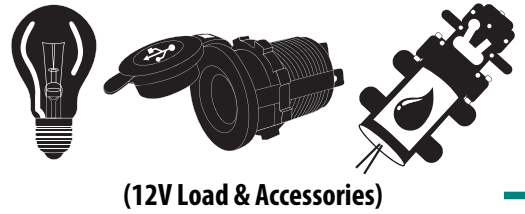
SERVICE & SUPPORT	DIAGRAMS AVAILABLE ONLINE
QUICK & EASY INSTALLATION	5 YEAR WARRANTY
PROGRAMMABLE FOR MOST BATTERIES	LIFETIME TECH SUPPORT

SUITABLE FOR 12V AND AC APPLIANCES

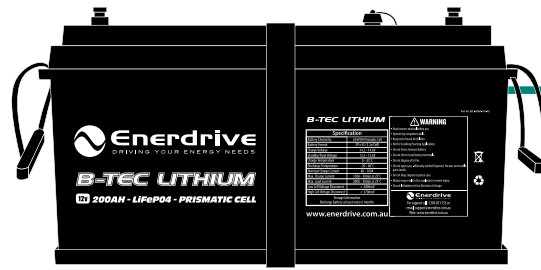




Enerdrive Fixed Solar Panels



(12V Load & Accessories)



Enerdrive B-TEC Lithium Batteries
Battery Capacity Options Available

- x1 B-TEC 200Ah = Total 200Ah
- x2 B-TEC 200Ah = Total 400Ah
- x1 B-TEC 300Ah = Total 300Ah
- x2 B-TEC 300Ah = Total 600Ah



490mm

600mm

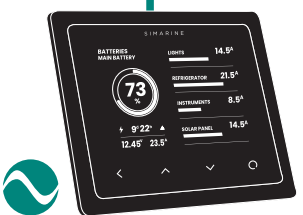
Depth: 98mm
Weight: 12kg

COMPONENT DESCRIPTIONS	
1.	DC2DC - Safely charge your Battery System via vehicle & solar
2.	AC Charger - Safely charge your Battery System from AC Mains or Generator
3.	Battery Reset Button - Restart your flat Lithium Battery with ease
4.	Simarine Shunt - Monitor multiple circuits; eg. fridge, solar lights, water tank etc
5.	Quality Circuit Protection

COMPLETE YOUR SYSTEM WITH ENERDRIVE
B-TEC LITHIUM BATTERIES




FEATURES
5 Year Warranty
Lifetime Support
Bluetooth Battery Monitor
Battery Reset Button
Serviceable Internal Bms (by Enerdrive)
Size & Weight Savings



Simarine Battery Monitor

TO BUILD THE ULTIMATE ENERDRIVE POWER SYSTEM,
CONSIDER THESE SYSTEM UPGRADE OPTIONS:

eSYSTEM-D OPTIONS	QTY
Battery to Board Cable Kit	
Solar Panels	
B-TEC Battery/Batteries	
Battery Parallel Cable Kit	
Tow Hitch to DC2DC Cable Kit	
Vehicle Start Battery to Tow Hitch Cable Kit	
Solar Cable Kit	
Consider eSYS-E for ePRO Plus Battery Monitor options	
Replace 25T Shunt  for SCQ50 (x4 50A Monitorable shunt channels)	
Water tank module ST107 (x4 tank)	
ePOWER Inverter 2000W or 2600W	

Any questions please speak to your Enerdrive representative today. We can help you create the Ultimate Power System.

NOTES